

# Jet Printers

## VersaJet LC

### Ink Jet Printers for the Real World

Versatility and reliability is what the Little David® VersaJet® LC is all about.

Little David delivers packaging equipment that works for you



Flexible large character ink jet printer



#### The VersaJet® LC offers:

- ▣ Various mounting strategies
- ▣ Prints up to 6 lines
- ▣ Print on 1 or 2 production lines
- ▣ Print on 1 or 2 sides of a box
- ▣ Only one controller needed
- ▣ UL listed
- ▣ 90 day warranty
- ▣ 2 year valve warranty

#### The VersaJet® LC replaces:

- ▣ Roller coders
- ▣ Labor-intensive marking methods
- ▣ Stencils

Little David VersaJet® LC



**LITTLE**  **DAVID**

[www.loveshaw.com](http://www.loveshaw.com)

# VersaJet® LC

## Features:

### Reliable Performance:

- Over 20 years proven technology
- 2 Year warranty on valves
- 90 day warranty

### Flexible:

- 1 to 6 printheads
- Automatic date and time coding
- Automatic shift changes
- RS232/RS422 serial port
- Alphanumeric incrementing
- Saves parameters with each message
- Multiple fonts available

### Easy Operation:

- User friendly software
- Minimal operator training required
- Convenient bulk ink system

## Specifications:

### Power Requirements:

- 110 VAC, 60 Hz, 3 Amps maximum (switch selectable)
- Other voltages 220 VAC, 60 Hz, 1.5 Amps maximum (switch selectable)

### Operating Speed:

- Up to 100' per minute (30.5m/min)  
(Depending on system set-up conditions)
- High speed available (Consult factory)

### Character Font:

- 7 x 5 dot matrix, 7 x 10 dot matrix in bold with standard printhead
- Optional 16-dot high-character printhead

### Character Height:

- 6 standard sizes: 3/8" (10mm), 1/2" (13mm), 7/8" (22mm), 1-1/4" (32mm), 1-1/2" (38mm), 2" (51mm)
- Optional high-character printhead prints at heights of 15/16" (23.8mm), 1-1/4" (32mm), and 2-7/32" (56.4mm)

### Character Set:

- Full ASCII 64 character upper case set. Up to 39 characters per line

### Language Options:

- English, Spanish, French, Italian, German, Dutch, or Portuguese

### Print Direction:

- Forward, reverse or upside down

### Memory:

- 15k of variable length messages

### Temperatures:

- Operating - 50°F to 95°F (10°C to 35°C)
- Storage - 5°F to 100°F (-15°C to 38°C)

### Options:

- 20' printhead cable assembly available

## Distributor Information:



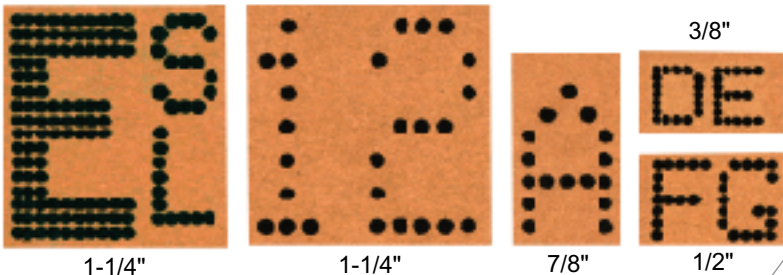
- Stainless steel for durability
- User friendly software
- 1 controller drives up to 6 printheads or 3 high character printheads



- Standard 5-gallon bulk ink supply system includes an air pump capable of distributing ink to multiple printheads
- Alleviates the need for factory supplied air line, thereby avoiding possible contaminants from this source



VersaJet LC Print Samples:



**LOVESHAW**  
an ITW Company

Route 296, Box 83  
South Canaan, PA 18459  
Tel: (570) 937-4921 Fax: (570) 937-3229  
(800) 572-3434

**LOVESHAW Europe**  
A Division of ITW Ltd.

Unit 9 Brunel Gate  
West Portway Industrial Estate  
Andover, Hampshire England SP 10 3 SL  
Tel: (1264) 357511 Fax: (1264) 355964

